



Fort McKavett March 19-23rd, 2026

Latitude is 30-49-46.5 Longitude is 100-06-24.1
Elevation is ~ 2000 FT. AMSL

The Multi-Club
Messier
Marathon



JSCAS's Spring trip to Fort McKavett has become a multi-club effort to conduct the Messier Marathon.

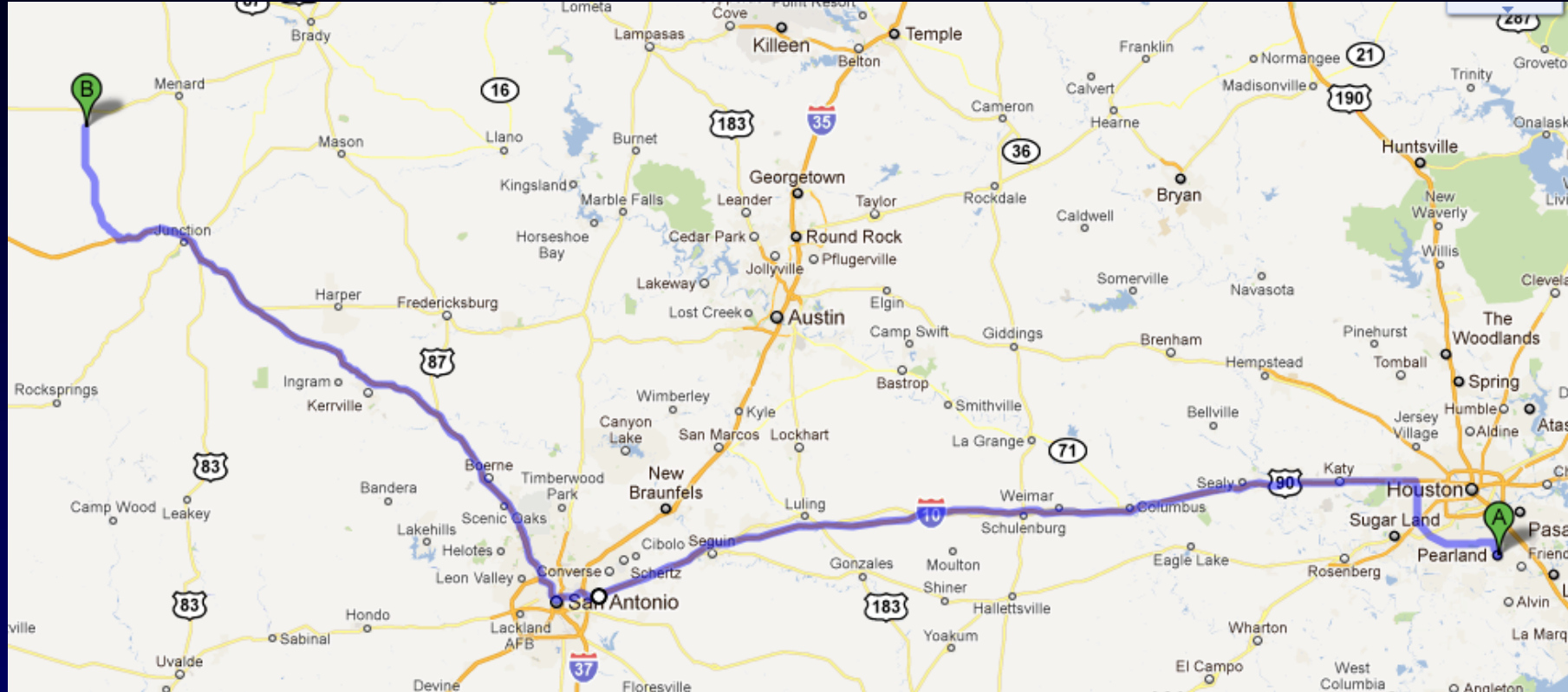
The last list now has 14 clubs potentially participating.

Understand that the Fort is out in the middle of nowhere in central Texas. The Bortle 2 skies are unmatched but as a result there is not much around the Fort.

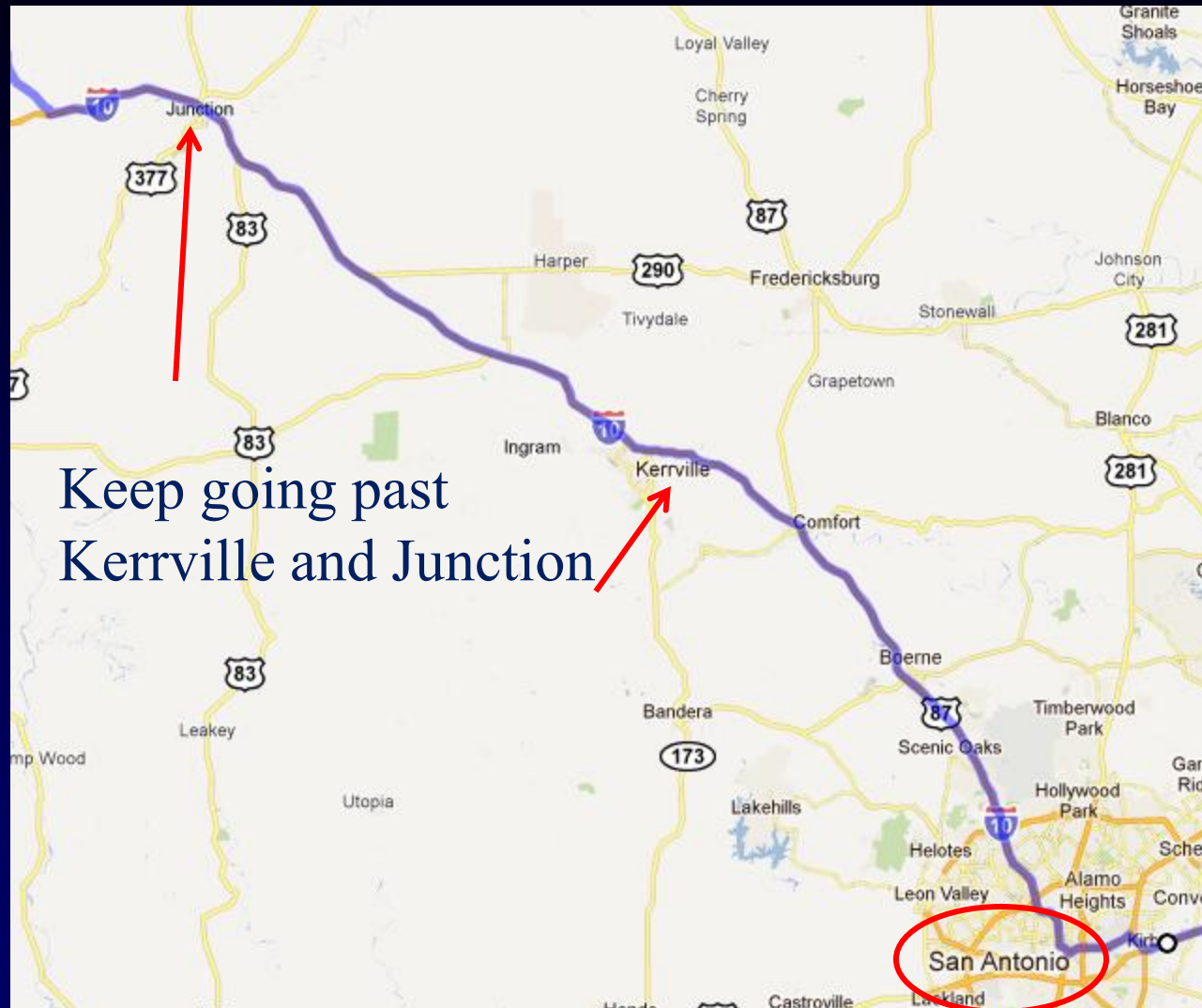
The nearest motel/hotels are in Menard (~24 miles away) and Junction (~60 miles away).

The Fort is willing to accommodate up to 100 people, and the FM Fire Station says it has 14 RV slots. 20-25 in the Barracks, the remainder will have to be in tents. Expect rustic, basic, accommodations.

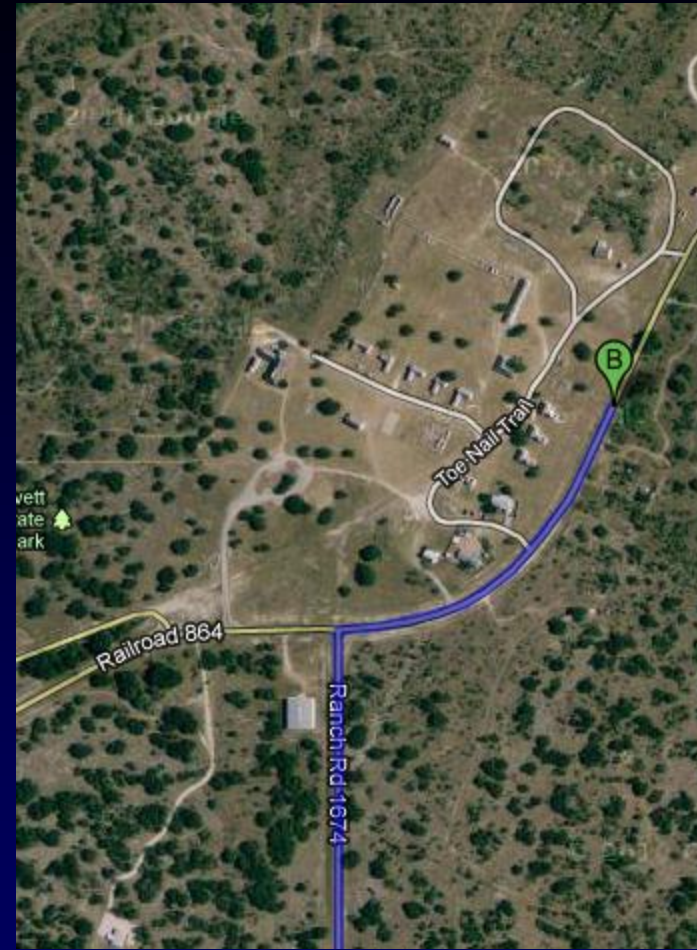
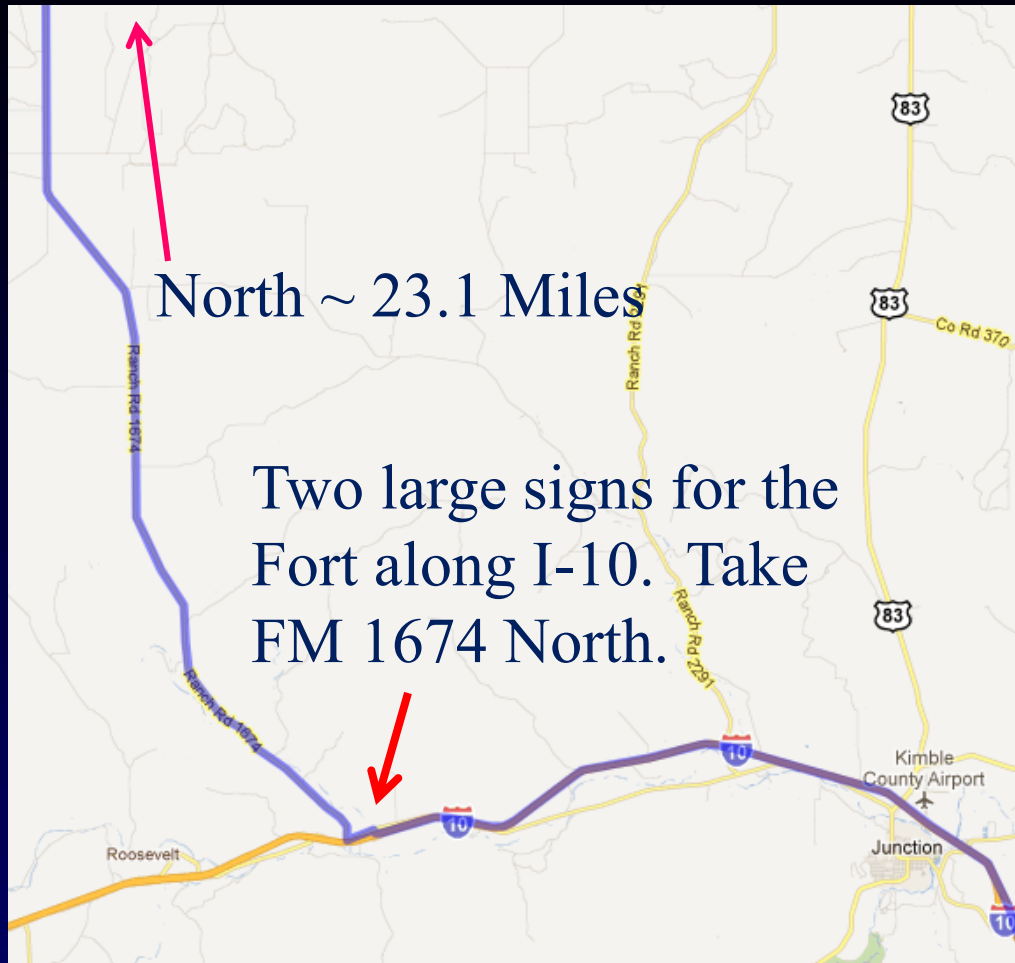
Just WHERE is Fort McKavett???



Relative to Houston ~365 miles... transit time depends on you and the number of stops you make along the way.



Keep going past
Kerrville and Junction



Along FM 1674 watch for deer and rabbits, especially at dusk and throughout the evening. The Fort will appear when you crest the last hill at the “T” intersection. Turn right at the stop sign.





Tents over here behind the ruins

Barracks

To
Fire
Station

Scopes

Fort McKavett

Cars parked here

Google

Let's talk about RV's.

- Limited – 14 total slots – Reserve in advance.
- 30Amp service and water only. (No 50Amp service)
- Not aware of a length restriction – yet!
- Single dump station at the Fire House.
- \$40/night and must be booked directly with Sarah Fusig with the FD. 281-910-3516
- Path between Fort and Station for walking or cars w/o having to use the main road.



Dump
Station

Black dots here are pedestals

Road from Fort



On to the fun stuff! Parade Grounds...



Views of the
barracks and
along the ruins...

You can set up just about anywhere but traditionally, scopes are set up on the NE side of Parade grounds.



Scopes and folks on the parade grounds...



Food! Work with your friends!
Traditional pot luck meals are
doable – usually this would be
on the Friday night. Burn bans
are the exception.



What to bring?

- Double check weather!! www.weather.com or whatever you prefer. In March we have had weather in the 70's/low 80's all the way down to 21°F in March of 03!! Check weather at least 10 days prior and watch it through time. Pack accordingly. October can be nippy as well.
- Bring sleeping bag and clothes apropos for weather (don't bring a fleece sleeping bag if it's going to be in the 30s/40's). If cool, you will need extra clothes, or a "hunter's suit", mitts and hat.
- Scout motto: Be Prepared. Come with Google Maps of the area so you know how to get to Menard, Junction, and even San Angelo if you think you'll have need. Hard copies are suggested as cell phone service for some may be limited.

Food

Planning ahead helps! Plan all of your own meals just in case.

Plan with your friends and colleagues from your own club and other clubs. Pot lucks work very well - folks bring something to put on the grill, and bring side dish. Plan for alternatives if there is a “burn ban”. If you have a propane stove and/or electric skillet – bring it as a back up.

If you arrive early enough on Thursday – a group usually heads to Menard to one of the local restaurants (be prepared – some venues in Menard are cash only).

You need to try to be as close to 100% self sufficient as possible!

Food (cont.)

Ice for coolers – you have two options. Menard or Junction. Hopefully, word will get around that someone may be heading to Menard or Junction and coordinate and ice run from there. If you have one of those high efficiency coolers (RTIC) use it!

Plan what to want to eat and how you want to work it. No camp stove, bring a folding table and an electric skillet. Don't forget the coffee pot and the coffee. Bring plenty of bottled water. Chapstick or equivalent – at 2000' it can be quite dry there.

Schedule

Based on JSCAS's traditional schedule

- Arrive Thursday – set up, Dinner (traditionally – many go to Menard for Tex/Mex), then observe
- Friday – Breakfast, Lunch, and Dinner – you are on your own. Clubs may do a communal Grill/Pot luck), then observe.
- Saturday – Breakfast, lunch, and dinner are up to you. Understand that Saturday night is the public star party. That is our service to the Fort. Please participate. For the Marathon – we are checking with the Fort to see if they want the public to come out that night. Plan on it being a multi-club “star party” night.
- Sunday – on your own food wise -- pack up, and leave. (Sometimes we have been allowed to stay until Monday)

What you will find at Ft. McKavett

- Showers – two - open air, but enclosed. Only buzzards and airplanes with really good cameras can see you. H&C running water in the showers.
- Bathrooms and porta-potties.
- Nice people
- Great skies – weather permitting
- A chance to “get away from it all” for a few days – don’t plan on much cell service. (AT&T is passable but Verizon goes DOA about 2 miles north of I-10.

What you WON'T find at Ft. McKavett

Quite a bit! - You need to be self sufficient.

- About all you'll find in Ft. McKavett is the sky.
- Nearest town is Menard, 23 miles with groceries, ice, and some amenities, passable restaurants (some are cash only!).
- Junction is ~60 miles away, with more to it.
- Nearest Walmart is in Brady, ~ 60 miles away.
- San Angelo ~ 80 miles away, small city.

Get the feeling you're in the middle of nowhere?
Well, you're out there for a reason!

Above all – HAVE FUN!!!

