



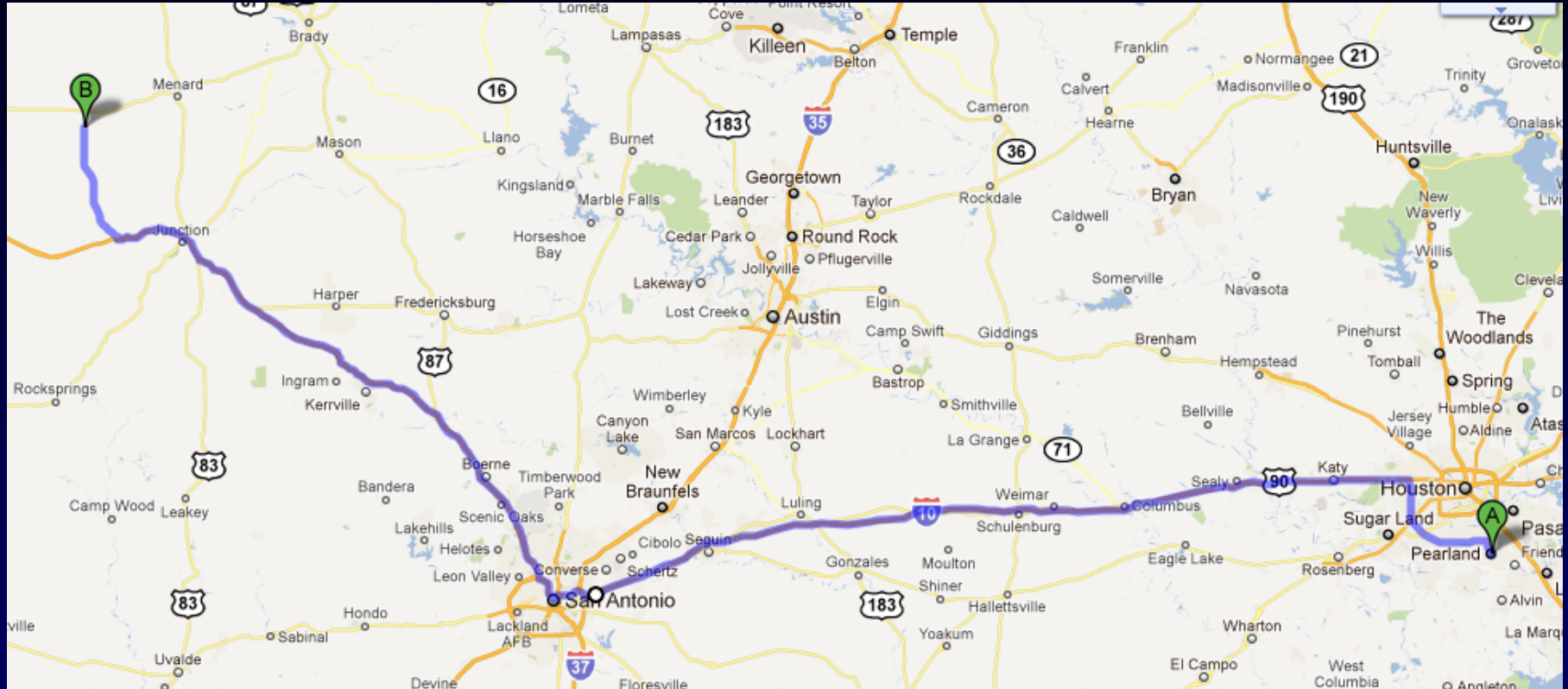
# Fort McKavett

## October 16-19, 2025

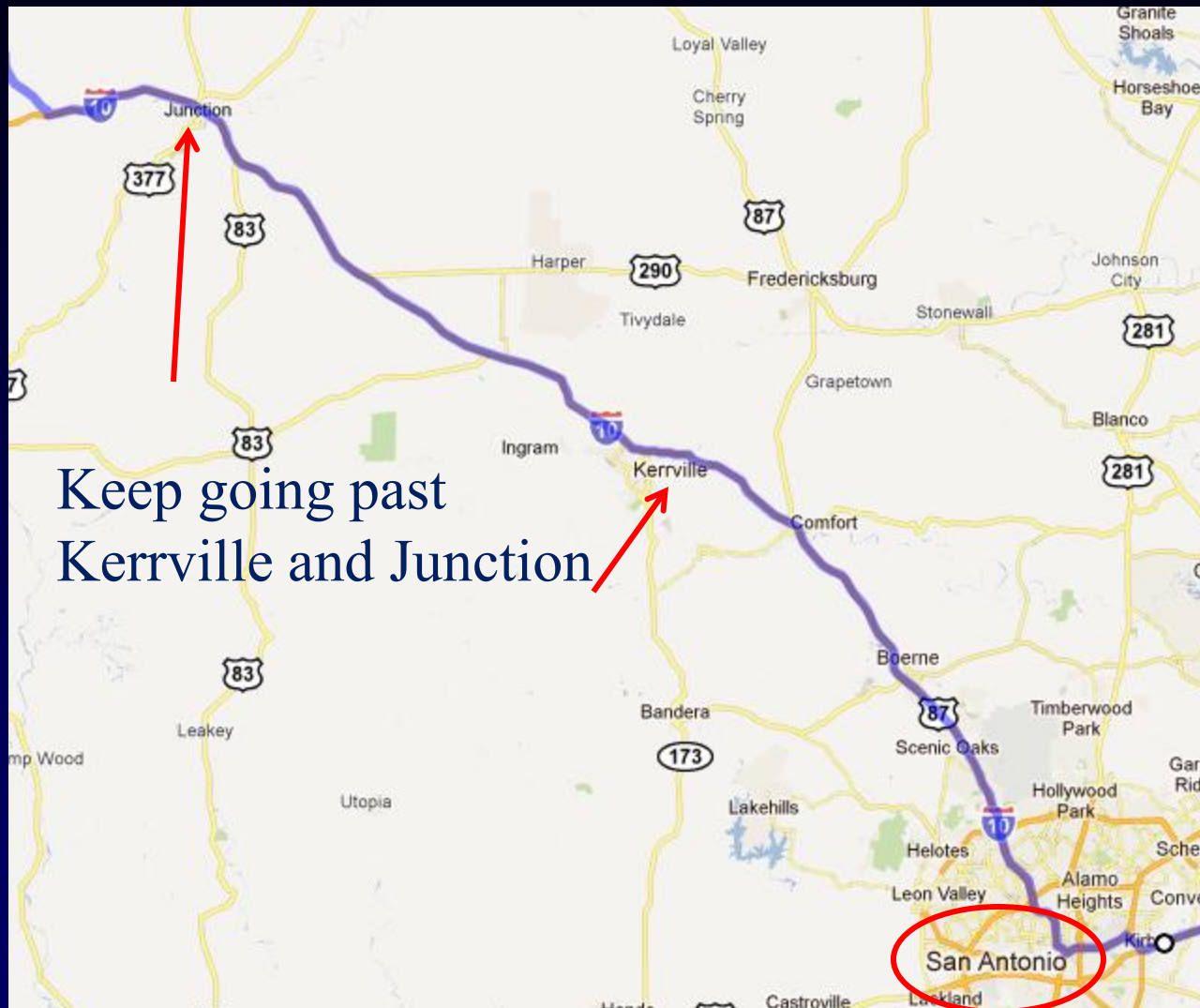
Latitude is 30-49-46.5      Longitude is 100-06-24.1      Elevation is ~ 2000 FT. AMSL

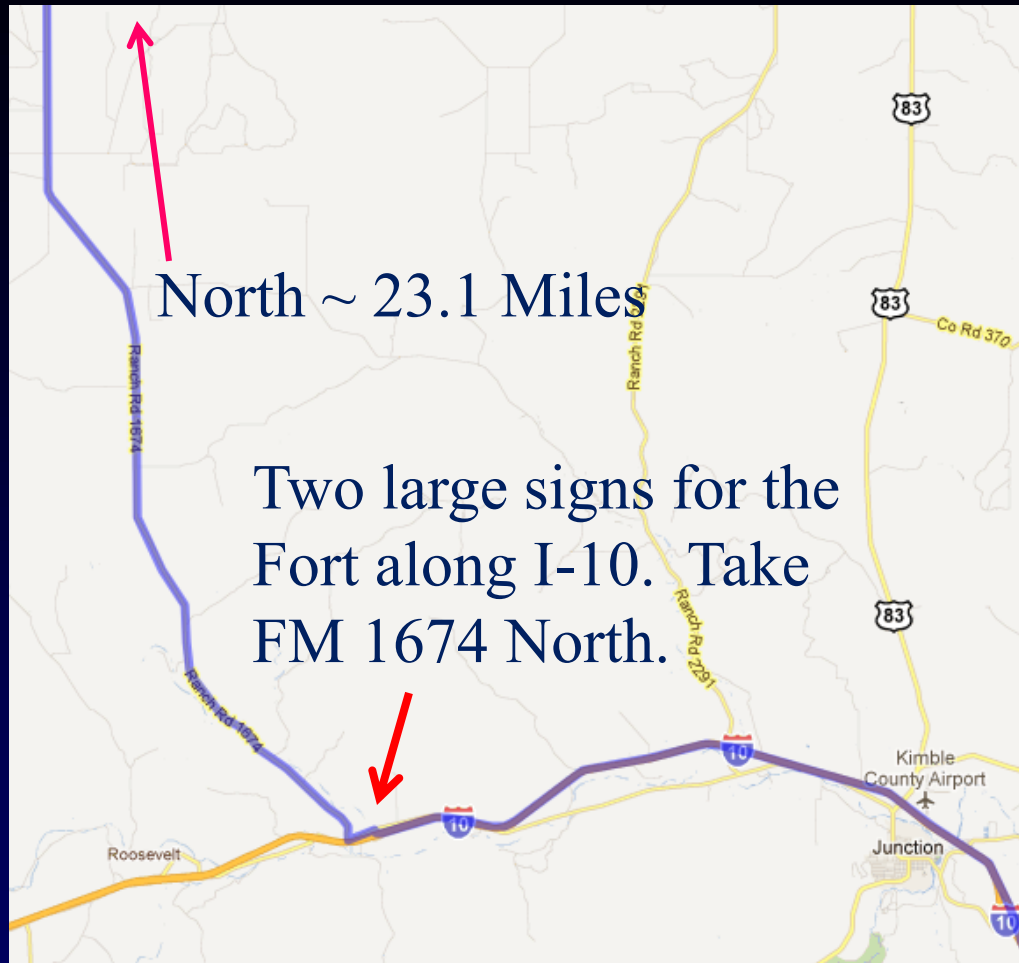


# Just WHERE is Fort Mac???



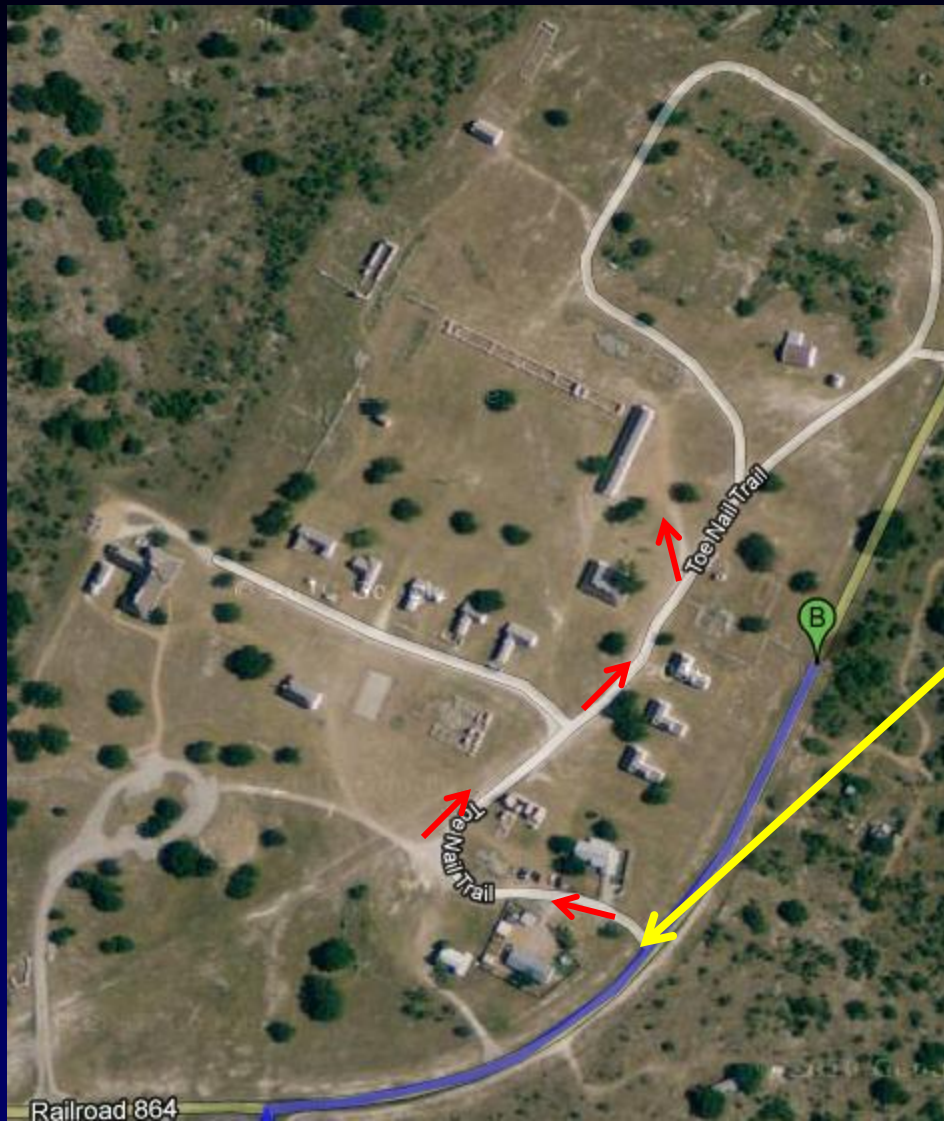
~365 miles... transit time depends on you and the number of stops you make along the way.





Along FM 1674 watch for deer and rabbits, especially at dusk and throughout the evening. The Fort will appear when you crest the last hill. Turn right at the stop sign.





After making the right turn, make the left turn and enter here and drive around to the ruins and barracks.



# Just another overview of the Fort





Tents over here behind the ruins

Barracks

Scopes

To  
Fire  
Station

Cars parked here

Fort McKavett

Google

## Let's talk about RV's.

- Limited – 14 total slots – Reserve in advance.
- 30Amp service and water only. (No 50Amp service)
- Not aware of a length restriction – yet!
- Single dump station at the Fire House.
- \$40/night and must be booked directly with Sarah Fusig with the FD. 281-910-3516
- Path between Fort and Station for walking or cars w/o having to use the main road.





Dump  
Station

This is an aerial satellite image from Google Maps. It shows a rural landscape with a large green field in the center, a dirt road curving around it, and several buildings. On the right, there is a large building with a grey roof, identified as 'Fort Mc Kavett Volunteer Fire'. Below it is a smaller building with a white roof, identified as 'United States Postal Service'. In the bottom right corner, there are railroad tracks. The text 'Dump Station' is written in yellow in the upper right area. The text 'Black dots here are pedestals' is written in yellow in the lower left area. The text 'Road from Fort' is written in yellow in the bottom left corner. The word 'Google' is visible at the bottom center.

Black dots here are pedestals

Road from Fort



On to the fun stuff! Parade Grounds...





Views of the  
barracks and along  
the ruins...



# Scopes and folks on the parade grounds...





Food! Work with your  
friends!  
Traditional pot luck –  
Friday night.



If you see this guy  
show up, stay close...  
he cooks very well  
and you  
won't be hungry for  
long!





We always gather for the mandatory group picture...



# What to bring?

- Double check weather!! [www.weather.com](http://www.weather.com) or whatever you prefer. In March we have had weather in the 70's/low 80's all the way down to 21°F in March of 03!! Check weather at least 10 days prior and watch it through time. Pack accordingly. October can be nippy as well.
- Bring sleeping bag and clothes apropos for weather (don't bring a fleece sleeping bag if it's going to be in the 30s/40's). If cool, you will need extra clothes, or a "hunter's suit", mitts and hat.
- Scout motto: Be Prepared. Come with Google Maps of the area so you know how to get to Menard, Junction, and even San Angelo if you think you'll have need. Hard copies are suggested as cell phone service for some may be limited.



# Food

Planning ahead helps! Plan all of your own meals just in case.

For Friday night, bring something to put on the grill, and bring side dish. This is a pot-luck meal. Plan for alternatives if there is a “burn ban”. If you have a propane stove and/or electric skillet – bring it as a back up.

If you arrive early enough on Thursday – a group usually heads to Menard to one of the local restaurants (be prepared – some are cash only).

You need to try to be as close to 100% self sufficient as possible!

## Food (cont.)

Ice for coolers – you have two options. Menard or Junction. Hopefully, word will get around that someone may be heading to Menard or Junction and coordinate and ice run from there.

Plan what to want to eat and how you want to work it. No camp stove, bring a folding table and an electric skillet. Don't forget the coffee pot and the coffee. Bring plenty of bottled water. Chapstick or equivalent – at 2000' it can be quite dry there.



# Schedule

- Arrive Thursday – set up, Dinner (traditionally – many go to Menard for Tex/Mex), then observe
- Friday – Breakfast and Lunch – you are on your own. Dinner is communal Grill/Pot luck), then observe.
- Saturday – Breakfast, lunch, and dinner are up to you. Understand that Saturday night is the public star party. That is our service to the Fort. Please participate.
- Sunday – on your own food wise -- pack up, and leave.

Anyone wanting to go must contact: David Haviland  
starhopper457@gmail.com

# What you will find at Ft. McKavett

- Showers – two - open air, but enclosed. Only buzzards and airplanes with really good cameras can see you. H&C running water in the showers.
- Bathrooms and porta-potties
- Nice people
- Great skies – weather permitting
- A chance to “get away from it all” for a few days – don’t plan on much cell service. (AT&T is passable but Verizon goes DOA about 2 miles north of I-10.



# What you WON'T find at Ft. McKavett

Quite a bit! - You need to be self sufficient.

- About all you'll find in Ft. McKavett is the sky.
- Nearest town is Menard, 23 miles with groceries, ice, and some amenities, passable restaurants (some are cash only!).
- Junction is ~40 miles away, with more to it.
- Nearest Walmart is in Brady, ~ 60 miles away.
- San Angelo ~ 80 miles away, small city.

Get the feeling you're in the middle of nowhere?  
Well, you're out there for a reason!

# Slight Digression:

Some like to link the trip to the Fort and the El Dorado Star Party in the fall. This year they fall on consecutive weekends.

The Fort trip is Oct 16-19, 2025, and

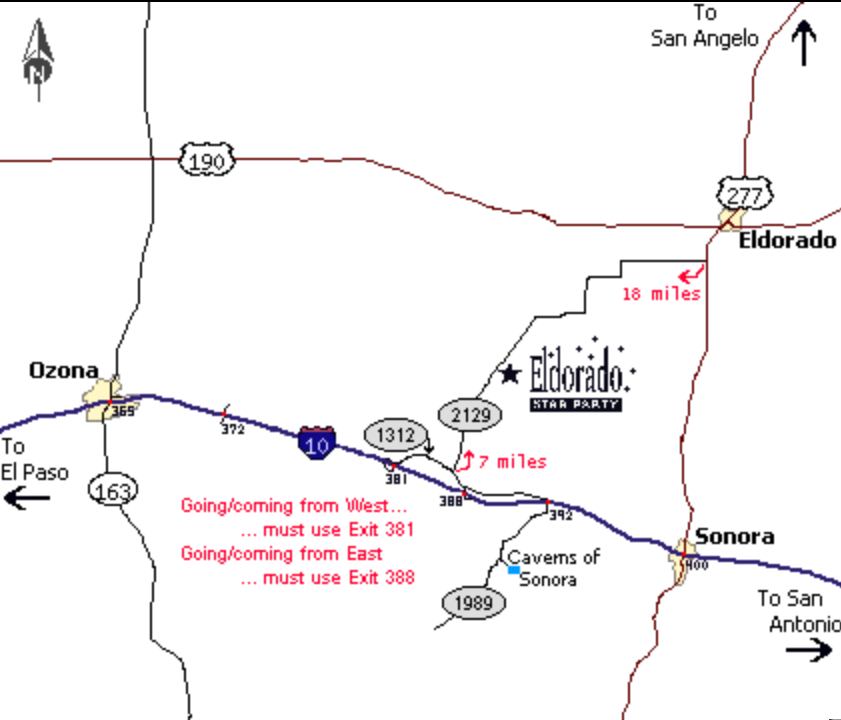
The EDSP is Oct 20<sup>th</sup> – 25<sup>th</sup> , 2025

The folks at the Fort let us stay until Monday the 20<sup>th</sup> and people just hop down I-10.

I-10 is the best way there to EDSP, as back country roads may not be suitable for large vehicles and RV's.

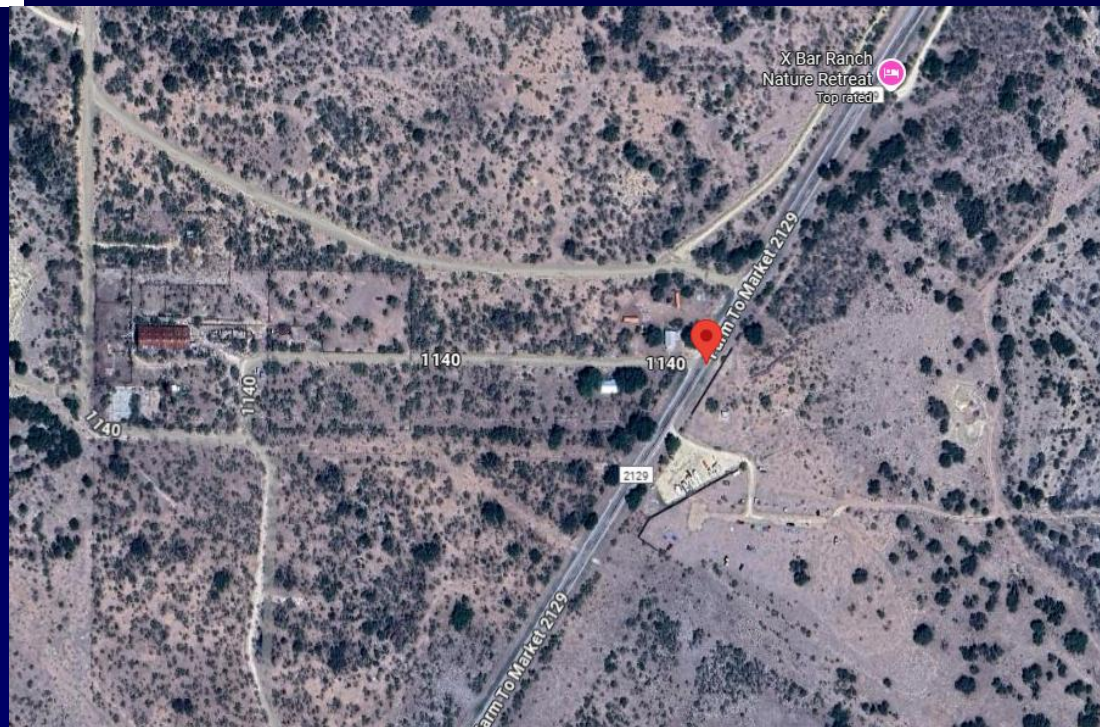
Directions are on the next slide.





Many, have opted to link the El Dorado Star Pary with the trip to Fort McKavett. The Fort is slated for Oct 16th-19th (were we stay an additional night to the 20<sup>th</sup>), then shift over to the EDSP at the XBar Ranch from Oct 20<sup>th</sup> to the 25<sup>th</sup>.

To get to XBar from the Fort, continue heading west on I-10, past Sonora, until you get to exit 388 – Get off there – Drive a short distance on 1312, until you get to 2129 – take that and keep going until you get to the XBar ranch.







Above all – HAVE FUN!!!

Any questions: feel free to email some in the club off the webpage, our list group. ALL reservations must be handled through David Haviland ([starhopper457@gmail.com](mailto:starhopper457@gmail.com))